

Company Profile 2024



Our Group



**Schwechater
Kabelwerke GmbH**

The competent contact with a
wide range of cables in
Schwechat/Austria

TOP SUPPLIER

RELIABLE PARTNER



**PRAKAB PRAŽSKÁ
KABELOVNA, s.r.o.**

The quality producers of power
and railroad safety cables in
Prague/Czech Republic.

HIGH LEVEL OF EXPERTISE

TOP PRODUCER



**ICS Industrial Cables
Slovakia, spol.s r.o.**

The flexible specialists for
high-quality industrial cables in
Nitra/Slovakia

FLEXIBLE SOLUTIONS

INNOVATIVE PARTNER

History



1891

Otto Steiner, the great-grandfather of the current owners, founds the company SKW



1908

Subsidiaries in Prague and Budapest ensure the worldwide distribution



1921

Foundation of Prazska Kabelnova a.s. together with Dr. Emil Kolben



1939

Separation of PRAKAB from the SKB Group



1950

Expansion of the Prague site

History



1992

Return to Czech Republic by acquiring PRAKAB



1997

Focus on power cable production at PRAKAB



2003

Installation and commissioning of a test center and fire laboratory for FRNC cables



2013

Expansion of the outdoor storage area through the construction of a high-bay cable drum rack



2019

Change of managing director at SKW – Wolfgang Nuspl manages the company together with long-time MD Robert Vodnek



SKB GROUP

Family Business

- Operationally managed by the owner family since its foundation in 1891.
- Living values: reliability and responsibility
- The brothers Mag. Alexander Tremmel and Dr. Christoph Tremmel have been managing the group of companies in the 5th generation since 1990

SKW Management

- Change of managing director at SKW in 2019: Mr. Wolfgang Nuspl is appointed Managing Director and will lead the company together with the long-standing Managing Director Mr. Vodnek.
- Know-how, competence and continuity are the backbone of SKW
- Responsibility for employees, customers and suppliers are the prerequisites for the long-term positive development of the company



ING. MAG. ROBERT VODNEK



WOLFGANG NUSPL



Highlights 2023

70

Employees

26.000 t

Products

54.000 m²

Warehouse Area

35.000 m²

Production Space

Geographical Position



HOME MARKET SKB-GROUP

EXPORT MARKET SKB-GROUP

Energy Cable

- For the distribution of electrical energy
- Power cables up to 1 kV are used for power distribution in local power supply networks and in industrial areas.
- Medium-voltage cables 10 – 30 kV are used for power distribution from power plants to substations as well as for wind and solar power plants
- They are installed underground in pipes or in cable ducts
- Products such as:

E-YY E-Y2Y E-AYY, E-AY2Y,

NY Y NY2Y N2XY E-YY NYCY NYCWY NAYY

NAYY NAY2Y NAYCWY E-YBY NYBY NA2XS(F)2Y

N2XS(F)2Y



PRODUCT

Telecommunication and Railroad Signal Cable

for indoor and outdoor use

- For signal and power transmission in train protection systems
- Are mainly used by railroad companies and subways with special requirements for mechanical load capacity, fire resistance with functional integrity, for the protection of people and building facilities
- Products such as S-2Y2YBY, S-2Y2YCB2Y, Sw-CLT, BRQKAtQAHVQ, TCEPKPFLEZE etc.

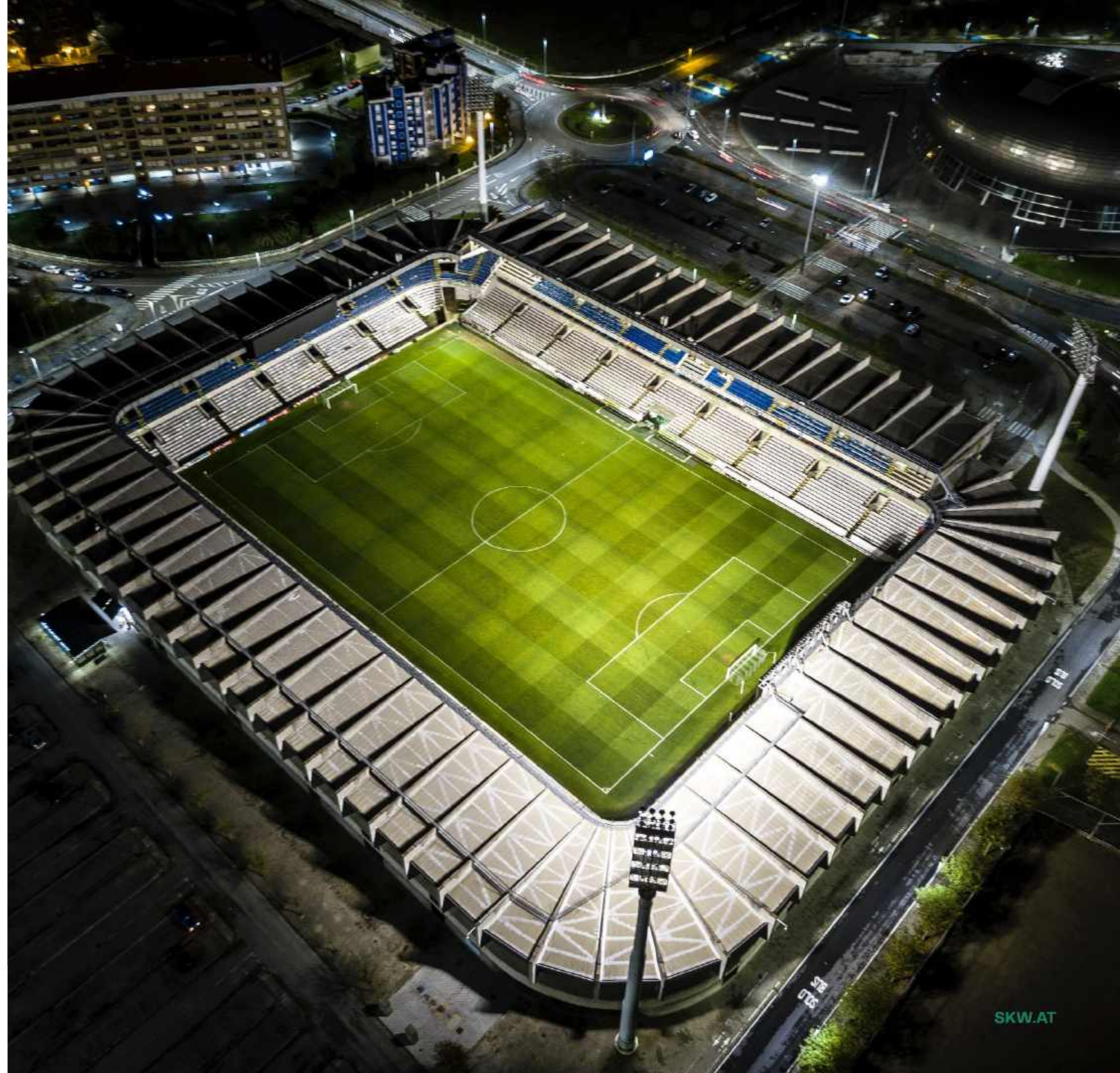


PRODUCT

Installation Cables

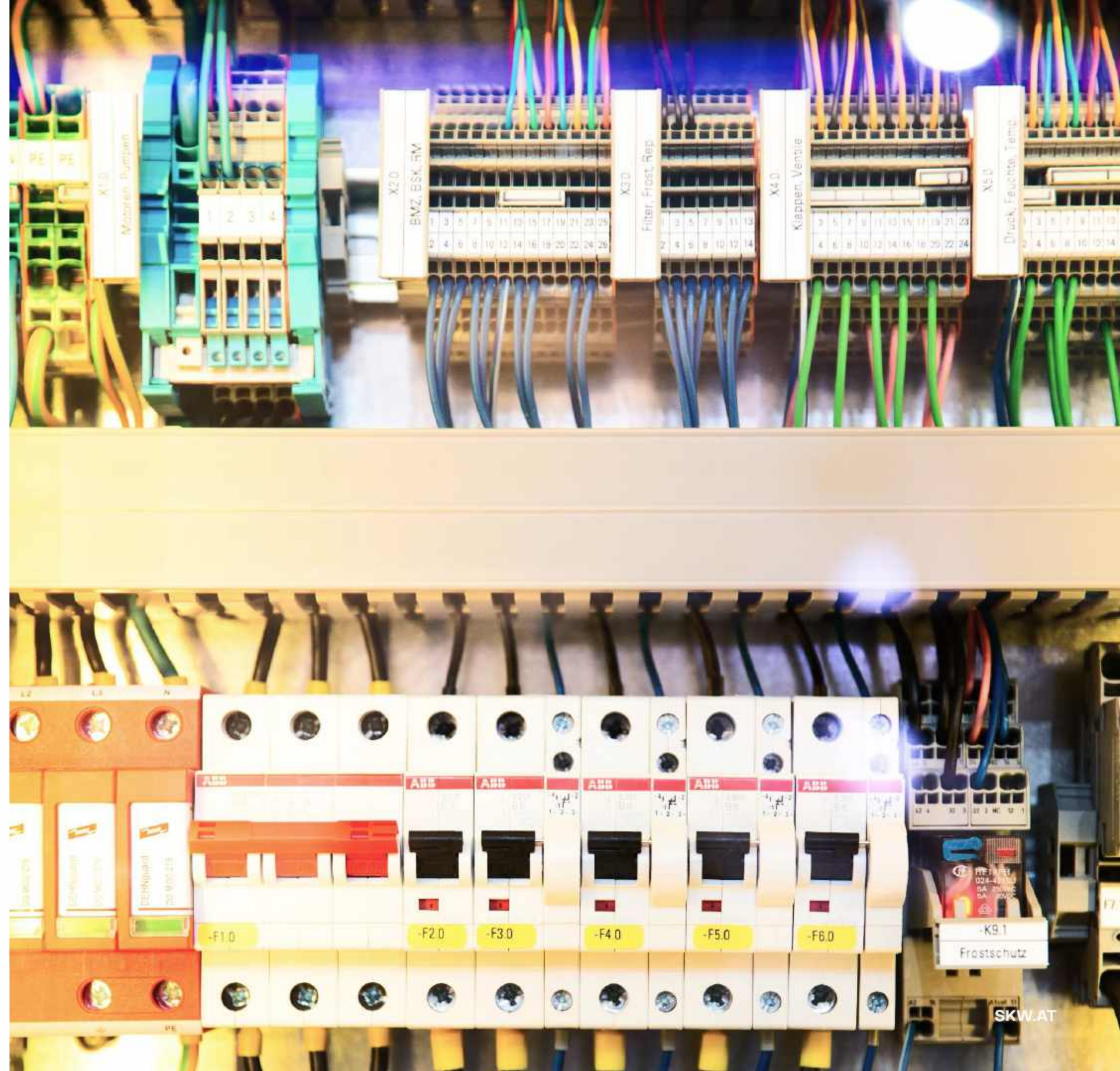
for indoor and outdoor use

- Are mainly used in residential and industrial buildings and public buildings such as hospitals
- Further areas of application are: protected installation in devices or for connecting luminaires, on and under plaster, as well as in electrical installation conduits
- Products such as: H07V-U, H07V-R, YM(A5VV-U, -R), NYM, NHXMH etc.



Flexible and industrial cables

- Are used for electrical connections in switch cabinets and components in production machines and machine tools.
- Special types are used in households, in offices for hand-held devices and for lighting fixtures
- Products such as H07V-K, H05VV-F, H05RN-F, H07RN-F, YSLY, YSLCY, HSLH, HSLCH, 2YSL(St)CY etc.



Electrical Wholesale

REXEL Frauenthal

Gautzsch



Telecom & Railway

Telekom Austria / ÖBB

SBB / Infrabel



Plant Construction

Cegelec / Christof Electrics

Caverion / Siemens / ELIN

PKE / Dürr



Utilities

EVN / Netz NÖ / Energie AG OÖ /
KELAG / Salzburg AG /
Energie Steiermark / TINETZ / TIWAG /
VEN / illwerke vkw / Wiener Netze





PRODUCT

Audit & Test Field

incl. fire lab

- Customer-specific acceptance tests and random incoming inspections of all cable types, which are carried out in addition to the factory-prescribed tests of the respective standard (ÖVE, VDE, IEC,...). We primarily carry out routine and selection tests to maintain quality. Acceptance tests are offered for a fee at the customer's request.
- In the fire laboratory, flame-retardant halogen-free cables are subjected to tests in accordance with EN50265-2-1, EN50267-2-2, EN50266-2-4, EN50268-2. Acceptance tests are offered for a fee.
- We make our test facility and fire laboratory, including qualified test personnel, available to external companies for test and inspection purposes for a fee.

ezü electrotechnical
testing
institute

TELE

FIRES
THE EXPERTS ON FIRE SAFETY

PAVUS

VDE
INSTITUT

EVPU
Elektrotechnický výskumný
a projektový ústav Nereš Dubnica, s.r.o.

OVE
Österreichischer Verband
für Elektrotechnik

Quality and Environmental Management

- Customer expectations of SKW are products of the highest quality in accordance with the prescribed standards
- In order to keep the quality standard permanently high, our products are guaranteed by certificates (ÖVE, VDE etc.)
- To ensure high-quality processes, we provide our customers with our new ISO certificate, ISO 9001:2015
- The official requirements were positively fulfilled with the energy audit



Compliance

The SKB Group

- has been an entrepreneurial family business for over 130 years
- has a strong foundation of clear ethical and moral principles
- wishes to continue to live up to its existing integrity in business life on a daily basis, for which the responsibility of each individual employee is essential

Clear ethical
and
moral principles

THE BASIS FOR LONG-TERM
BUSINESS RELATIONSHIPS



Location

SCHWECHATER Kabelwerke GmbH
Himberger Straße 50
2320 Schwechat
Austria

tel.: +43 (0)1 70170-0
e-mail: office@skw.at
www.skw.at

